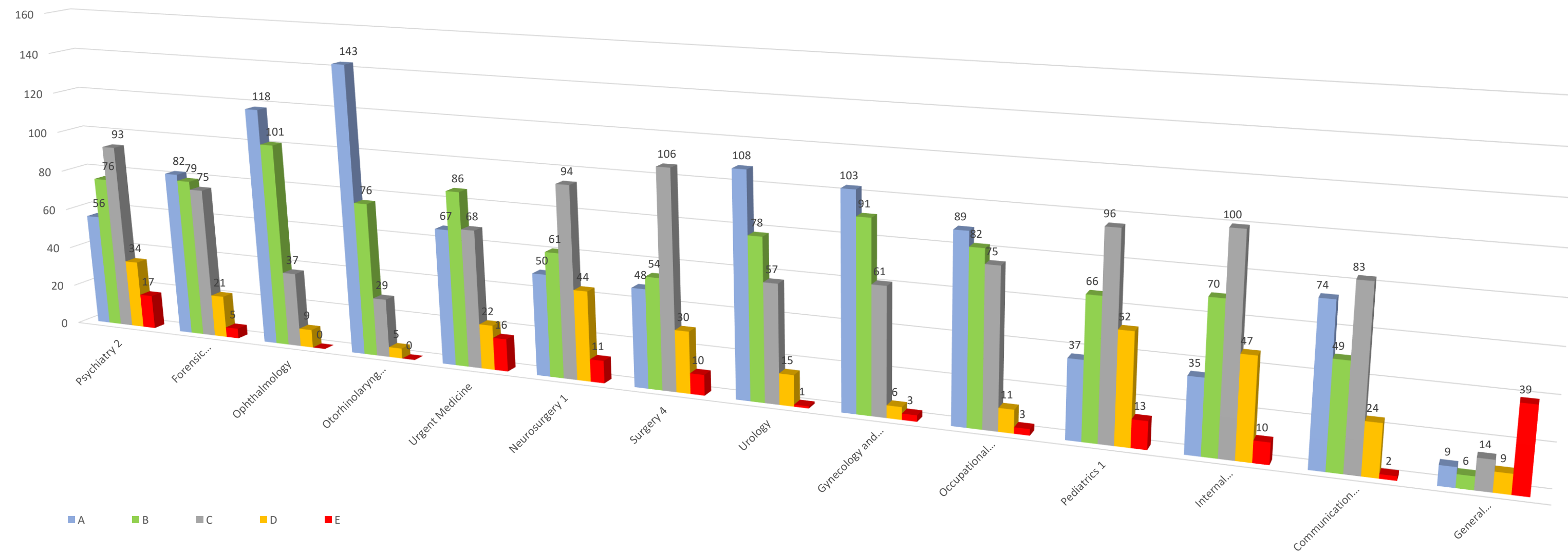


5. ročník VLa - zahraniční studenti

Celkový počet odpovědí	Psychiatry 2	Forensic Medicine and Medical Legislative	Ophthalmology	Otorhinolaryngology	Urgent Medicine	Neurosurgery 1	Surgery 4	Urology	Gynecology and Obstetrics 1	Occupational Medicine and Toxicology	Pediatrics 1	Internal Medicine 3	Communication in Clinical Practice 2	General Medicine and Practice at General Practitioner
A	56	82	118	143	67	50	48	108	103	89	37	35	74	9
B	76	79	101	76	86	61	54	78	91	82	66	70	49	6
C	93	75	37	29	68	94	106	57	61	75	96	100	83	14
D	34	21	9	5	22	44	30	15	6	11	52	47	24	9
E	17	5	0	0	16	11	10	1	3	3	13	10	2	39
	276	262	265	253	259	260	248	259	264	260	264	262	232	77

5. ročník VLa - zahraniční studenti



Psychiatry 2

In General

1. Subject fulfilled my expectations
2. I managed the study of the subject
3. The subject helped me to form relationship to my future profession

A	B	C	D	E	SUM	A-B	C	D-E
2	3	11	4	0	20	25%	55%	20%
6	6	6	2	0	20	60%	30%	10%
3	5	6	3	2	19	42%	32%	26%
11	14	23	9	2	59			
42%		39%	19%					

Study conditions

1. Number of students in a group
2. Technical, material, practical equipment of a classroom and teaching aids
3. Recommended study literature was up-to-date and available

A	B	C	D	E	SUM	A-B	C	D-E
1	5	6	5	3	20	30%	30%	40%
2	4	8	5	1	20	30%	40%	30%
1	7	9	2	1	20	40%	45%	15%
4	16	23	12	5	60			
33%		38%	28%					

Subject organization

1. Syllabi and requirements for completion of the subjects were clearly defined at the beginning of the semester
2. Teaching of subject was logically organized, understandable and comprehensible
3. Obtained Information were in accordance with the content of the subject
4. Topic of practical exercise was related to lecture topic
5. Requirements for the exam corresponded with the demands of the subject during the study.

A	B	C	D	E	SUM	A-B	C	D-E
9	5	3	1	2	20	70%	15%	15%
4	3	7	2	1	17	41%	41%	18%
5	5	7	2	1	20	50%	35%	15%
8	5	5	1	1	20	65%	25%	10%
5	6	7	1	1	20	55%	35%	10%
31	24	29	7	6	97			
57%		30%	13%					

Self-assessment, students' observations / opinions

1. I actively took part in the activities and discussions during lessons
2. I asses the students' activity in my group as

A	B	C	D	E	SUM	A-B	C	D-E
5	8	3	2	2	20	65%	15%	20%
3	7	6	3	1	20	50%	30%	20%
8	15	9	5	3	40			
58%		23%	20%					

What is your overall assessment of the subject?

A	B	C	D	E	SUM	A-B	C	D-E
2	7	9	1	1	20	45%	45%	10%
45%		45%	10%					

Forensic Medicine and Medical Legislative

In General

1. Subject fulfilled my expectations
2. I managed the study of the subject
3. The subject helped me to form relationship to my future profession

A	B	C	D	E	SUM	A-B	C	D-E
2	8	6	2	1	19	53%	32%	16%
5	11	3	0	0	19	84%	16%	0%
2	1	12	3	1	19	16%	63%	21%
9	20	21	5	2	57			
51%		37%	12%					

Study conditions

1. Number of students in a group
2. Technical, material, practical equipment of a classroom and teaching aids
3. Recommended study literature was up-to-date and available

A	B	C	D	E	SUM	A-B	C	D-E
15	2	2	0	0	19	89%	11%	0%
8	6	3	2	0	19	74%	16%	11%
3	3	8	4	0	18	33%	44%	22%
26	11	13	6	0	56			
66%		23%	11%					

Subject organization

1. Syllabi and requirements for completion of the subjects were clearly defined at the beginning of the semester
2. Teaching of subject was logically organized, understandable and comprehensible
3. Obtained Information were in accordance with the content of the subject
4. Topic of practical exercise was related to lecture topic
5. Requirements for the exam corresponded with the demands of the subject during the study.

A	B	C	D	E	SUM	A-B	C	D-E
8	6	3	1	1	19	74%	16%	11%
3	2	8	2	1	16	31%	50%	19%
6	7	5	1	0	19	68%	26%	5%
3	7	7	1	1	19	53%	37%	11%
8	5	5	1	0	19	68%	26%	5%
28	27	28	6	3	92			
60%		30%	10%					

Self-assessment, students' observations / opinions

1. I actively took part in the activities and discussions during lessons
2. I asses the students' activity in my group as

A	B	C	D	E	SUM	A-B	C	D-E
7	7	4	1	0	19	74%	21%	5%
8	8	2	1	0	19	84%	11%	5%
15	15	6	2	0	38			
79%		16%	5%					

What is your overall assessment of the subject?

A	B	C	D	E	SUM	A-B	C	D-E
4	6	7	2	0	19	53%	37%	11%
53%		37%	11%					

Ophthalmology

In General

1. Subject fulfilled my expectations
2. I managed the study of the subject
3. The subject helped me to form relationship to my future profession

A	B	C	D	E	SUM	A-B	C	D-E
12	6	1	0	0	19	95%	5%	0%
10	7	2	0	0	19	89%	11%	0%
9	5	3	2	0	19	74%	16%	11%
31	18	6	2	0	57			
86%		11%	4%					

Study conditions

1. Number of students in a group
2. Technical, material, practical equipment of a classroom and teaching aids
3. Recommended study literature was up-to-date and available

A	B	C	D	E	SUM	A-B	C	D-E
9	3	5	2	0	19	63%	26%	11%
9	7	3	0	0	19	84%	16%	0%
7	7	4	1	0	19	74%	21%	5%
25	17	12	3	0	57			
74%		21%	5%					

Subject organization

1. Syllabi and requirements for completion of the subjects were clearly defined at the beginning of the semester
2. Teaching of subject was logically organized, understandable and comprehensible
3. Obtained Information were in accordance with the content of the subject
4. Topic of practical exercise was related to lecture topic
5. Requirements for the exam corresponded with the demands of the subject during the study.

A	B	C	D	E	SUM	A-B	C	D-E
9	8	2	0	0	19	89%	11%	0%
8	6	2	2	0	18	78%	11%	11%
7	8	2	2	0	19	79%	11%	11%
9	8	2	0	0	19	89%	11%	0%
9	8	2	0	0	19	89%	11%	0%
42	38	10	4	0	94			
85%		11%	4%					

Self-assessment, students' observations / opinions

1. I actively took part in the activities and discussions during lessons
2. I asses the students' activity in my group as

A	B	C	D	E	SUM	A-B	C	D-E
6	10	3	0	0	19	84%	16%	0%
6	7	6	0	0	19	68%	32%	0%
12	17	9	0	0	38			
76%		24%	0%					

What is your overall assessment of the subject?

A	B	C	D	E	SUM	A-B	C	D-E
8	11	0	0	0	19	100%	0%	0%
100%		0%	0%					

Otorhinolaryngology

In General

1. Subject fulfilled my expectations
2. I managed the study of the subject
3. The subject helped me to form relationship to my future profession

A	B	C	D	E	SUM	A-B	C	D-E
11	6	2	0	0	19	89%	11%	0%
10	7	2	0	0	19	89%	11%	0%
10	6	3	0	0	19	84%	16%	0%
31	19	7	0	0	57			
88%		12%	0%					

Study conditions

1. Number of students in a group
2. Technical, material, practical equipment of a classroom and teaching aids
3. Recommended study literature was up-to-date and available

A	B	C	D	E	SUM	A-B	C	D-E
13	2	3	1	0	19	79%	16%	5%
9	5	2	2	0	18	78%	11%	11%
8	4	3	2	0	17	71%	18%	12%
30	11	8	5	0	54			
76%		15%	9%					

Subject organization

1. Syllabi and requirements for completion of the subjects were clearly defined at the beginning of the semester
2. Teaching of subject was logically organized, understandable and comprehensible
3. Obtained Information were in accordance with the content of the subject
4. Topic of practical exercise was related to lecture topic
5. Requirements for the exam corresponded with the demands of the subject during the study.

A	B	C	D	E	SUM	A-B	C	D-E
10	6	2	0	0	18	89%	11%	0%
7	7	2	0	0	16	88%	13%	0%
10	6	2	0	0	18	89%	11%	0%
13	4	1	0	0	18	94%	6%	0%
10	7	1	0	0	18	94%	6%	0%
50	30	8	0	0	88			
91%		9%	0%					

Self-assessment, students' observations / opinions

1. I actively took part in the activities and discussions during lessons
2. I asses the students' activity in my group as

A	B	C	D	E	SUM	A-B	C	D-E
10	6	2	0	0	18	89%	11%	0%
10	6	2	0	0	18	89%	11%	0%
20	12	4	0	0	36			
89%		11%	0%					

What is your overall assessment of the subject?

A	B	C	D	E	SUM	A-B	C	D-E
12	4	2	0	0	18	89%	11%	0%
89%		11%	0%					

Urgent Medicine

In General

1. Subject fulfilled my expectations
2. I managed the study of the subject
3. The subject helped me to form relationship to my future profession

A	B	C	D	E	SUM	A-B	C	D-E
4	2	8	5	0	19	32%	42%	26%
4	8	5	2	0	19	63%	26%	11%
5	7	6	1	0	19	63%	32%	5%
13	17	19	8	0	57			
53%		33%	14%					

Study conditions

1. Number of students in a group
2. Technical, material, practical equipment of a classroom and teaching aids
3. Recommended study literature was up-to-date and available

A	B	C	D	E	SUM	A-B	C	D-E
0	1	4	1	13	19	5%	21%	74%
8	8	2	1	0	19	84%	11%	5%
10	7	2	0	0	19	89%	11%	0%
18	16	8	2	13	57			
60%		14%	26%					

Subject organization

1. Syllabi and requirements for completion of the subjects were clearly defined at the beginning of the semester
2. Teaching of subject was logically organized, understandable and comprehensible
3. Obtained Information were in accordance with the content of the subject
4. Topic of practical exercise was related to lecture topic
5. Requirements for the exam corresponded with the demands of the subject during the study.

A	B	C	D	E	SUM	A-B	C	D-E
5	7	5	2	0	19	63%	26%	11%
4	5	6	1	0	16	56%	38%	6%
5	9	4	1	0	19	74%	21%	5%
2	3	8	2	3	18	28%	44%	28%
8	6	5	0	0	19	74%	26%	0%
24	30	28	6	3	91			
59%		31%	10%					

Self-assessment, students' observations / opinions

1. I actively took part in the activities and discussions during lessons
2. I asses the students' activity in my group as

A	B	C	D	E	SUM	A-B	C	D-E
6	8	3	1	0	18	78%	17%	6%
3	10	4	1	0	18	72%	22%	6%
9	18	7	2	0	36			
75%		19%	6%					

What is your overall assessment of the subject?

A	B	C	D	E	SUM	A-B	C	D-E
3	5	6	4	0	18	44%	33%	22%
44%		33%	22%					

Neurosurgery 1

In General

1. Subject fulfilled my expectations
2. I managed the study of the subject
3. The subject helped me to form relationship to my future profession

A	B	C	D	E	SUM	A-B	C	D-E
2	5	3	8	1	19	37%	16%	47%
5	5	6	3	0	19	53%	32%	16%
2	3	6	6	2	19	26%	32%	42%
9	13	15	17	3	57			
39%		26%	35%					

Study conditions

1. Number of students in a group
2. Technical, material, practical equipment of a classroom and teaching aids
3. Recommended study literature was up-to-date and available

A	B	C	D	E	SUM	A-B	C	D-E
6	8	3	2	0	19	74%	16%	11%
5	4	7	2	1	19	47%	37%	16%
4	1	8	3	2	18	28%	44%	28%
15	13	18	7	3	56			
50%		32%	18%					

Subject organization

1. Syllabi and requirements for completion of the subjects were clearly defined at the beginning of the semester
2. Teaching of subject was logically organized, understandable and comprehensible
3. Obtained Information were in accordance with the content of the subject
4. Topic of practical exercise was related to lecture topic
5. Requirements for the exam corresponded with the demands of the subject during the study.

A	B	C	D	E	SUM	A-B	C	D-E
4	7	6	1	1	19	58%	32%	11%
4	2	5	5	2	18	33%	28%	39%
3	5	8	1	2	19	42%	42%	16%
4	4	6	1	0	15	53%	40%	7%
4	4	8	3	0	19	42%	42%	16%
19	22	33	11	5	90			
46%		37%	18%					

Self-assessment, students' observations / opinions

1. I actively took part in the activities and discussions during lessons
2. I asses the students' activity in my group as

A	B	C	D	E	SUM	A-B	C	D-E
2	5	10	2	0	19	37%	53%	11%
2	6	9	2	0	19	42%	47%	11%
4	11	19	4	0	38			
39%		50%	11%					

What is your overall assessment of the subject?

A	B	C	D	E	SUM	A-B	C	D-E
3	2	9	5	0	19	26%	47%	26%
26%		47%	26%					

Surgery 4

In General

1. Subject fulfilled my expectations
2. I managed the study of the subject
3. The subject helped me to form relationship to my future profession

A	B	C	D	E	SUM	A-B	C	D-E
1	4	6	6	1	18	28%	33%	39%
5	4	6	3	0	18	50%	33%	17%
2	5	6	4	1	18	39%	33%	28%
8	13	18	13	2	54			
39%		33%	28%					

Study conditions

1. Number of students in a group
2. Technical, material, practical equipment of a classroom and teaching aids
3. Recommended study literature was up-to-date and available

A	B	C	D	E	SUM	A-B	C	D-E
3	4	8	0	3	18	39%	44%	17%
5	2	7	4	0	18	39%	39%	22%
3	4	9	2	0	18	39%	50%	11%
11	10	24	6	3	54			
39%		44%	17%					

Subject organization

1. Syllabi and requirements for completion of the subjects were clearly defined at the beginning of the semester
2. Teaching of subject was logically organized, understandable and comprehensible
3. Obtained Information were in accordance with the content of the subject
4. Topic of practical exercise was related to lecture topic
5. Requirements for the exam corresponded with the demands of the subject during the study.

A	B	C	D	E	SUM	A-B	C	D-E
5	6	4	1	2	18	61%	22%	17%
3	2	7	2	2	16	31%	44%	25%
4	4	10	0	0	18	44%	56%	0%
4	2	10	0	0	16	38%	63%	0%
5	4	8	1	0	18	50%	44%	6%
21	18	39	4	4	86			
45%		45%	9%					

Self-assessment, students' observations / opinions

1. I actively took part in the activities and discussions during lessons
2. I asses the students' activity in my group as

A	B	C	D	E	SUM	A-B	C	D-E
3	5	8	2	0	18	44%	44%	11%
3	6	7	2	0	18	50%	39%	11%
6	11	15	4	0	36			
47%		42%	11%					

What is your overall assessment of the subject?

A	B	C	D	E	SUM	A-B	C	D-E
2	2	10	3	1	18	22%	56%	22%
22%		56%	22%					

Urology

In General

1. Subject fulfilled my expectations
2. I managed the study of the subject
3. The subject helped me to form relationship to my future profession

A	B	C	D	E	SUM	A-B	C	D-E
7	6	5	1	0	19	68%	26%	5%
7	8	4	0	0	19	79%	21%	0%
6	7	5	1	0	19	68%	26%	5%
20	21	14	2	0	57			
72%		25%	4%					

Study conditions

1. Number of students in a group
2. Technical, material, practical equipment of a classroom and teaching aids
3. Recommended study literature was up-to-date and available

A	B	C	D	E	SUM	A-B	C	D-E
11	3	2	2	1	19	74%	11%	16%
5	7	6	1	0	19	63%	32%	5%
6	3	7	2	0	18	50%	39%	11%
22	13	15	5	1	56			
63%		27%	11%					

Subject organization

1. Syllabi and requirements for completion of the subjects were clearly defined at the beginning of the semester
2. Teaching of subject was logically organized, understandable and comprehensible
3. Obtained Information were in accordance with the content of the subject
4. Topic of practical exercise was related to lecture topic
5. Requirements for the exam corresponded with the demands of the subject during the study.

A	B	C	D	E	SUM	A-B	C	D-E
9	6	4	0	0	19	79%	21%	0%
7	3	3	2	0	15	67%	20%	13%
7	4	6	2	0	19	58%	32%	11%
9	4	4	0	0	17	76%	24%	0%
8	5	3	3	0	19	68%	16%	16%
40	22	20	7	0	89			
70%		22%	8%					

Self-assessment, students' observations / opinions

1. I actively took part in the activities and discussions during lessons
2. I asses the students' activity in my group as

A	B	C	D	E	SUM	A-B	C	D-E
10	7	2	0	0	19	89%	11%	0%
10	7	2	0	0	19	89%	11%	0%
20	14	4	0	0	38			
89%		11%	0%					

What is your overall assessment of the subject?

A	B	C	D	E	SUM	A-B	C	D-E
6	8	4	1	0	19	74%	21%	5%
74%		21%	5%					

Gynecology and Obstetrics 1

In General

1. Subject fulfilled my expectations
2. I managed the study of the subject
3. The subject helped me to form relationship to my future profession

A	B	C	D	E	SUM	A-B	C	D-E
6	8	4	0	1	19	74%	21%	5%
7	9	3	0	0	19	84%	16%	0%
8	5	5	1	0	19	68%	26%	5%
21	22	12	1	1	57			
75%		21%	4%					

Study conditions

1. Number of students in a group
2. Technical, material, practical equipment of a classroom and teaching aids
3. Recommended study literature was up-to-date and available

A	B	C	D	E	SUM	A-B	C	D-E
12	2	4	0	1	19	74%	21%	5%
5	7	7	0	0	19	63%	37%	0%
7	4	6	0	0	17	65%	35%	0%
24	13	17	0	1	55			
67%		31%	2%					

Subject organization

1. Syllabi and requirements for completion of the subjects were clearly defined at the beginning of the semester
2. Teaching of subject was logically organized, understandable and comprehensible
3. Obtained Information were in accordance with the content of the subject
4. Topic of practical exercise was related to lecture topic
5. Requirements for the exam corresponded with the demands of the subject during the study.

A	B	C	D	E	SUM	A-B	C	D-E
8	8	3	0	0	19	84%	16%	0%
6	6	6	0	1	19	63%	32%	5%
6	5	6	2	0	19	58%	32%	11%
7	8	4	0	0	19	79%	21%	0%
7	7	3	2	0	19	74%	16%	11%
34	34	22	4	1	95			
72%		23%	5%					

Self-assessment, students' observations / opinions

1. I actively took part in the activities and discussions during lessons
2. I asses the students' activity in my group as

A	B	C	D	E	SUM	A-B	C	D-E
9	7	3	0	0	19	84%	16%	0%
9	7	3	0	0	19	84%	16%	0%
18	14	6	0	0	38			
84%		16%	0%					

What is your overall assessment of the subject?

A	B	C	D	E	SUM	A-B	C	D-E
6	8	4	1	0	19	74%	21%	5%
74%		21%	5%					

Occupational Medicine and Toxicology

In General

1. Subject fulfilled my expectations
2. I managed the study of the subject
3. The subject helped me to form relationship to my future profession

A	B	C	D	E	SUM	A-B	C	D-E
4	6	7	2	0	19	53%	37%	11%
8	7	4	0	0	19	79%	21%	0%
4	2	9	2	2	19	32%	47%	21%
16	15	20	4	2	57			
54%		35%	11%					

Study conditions

1. Number of students in a group
2. Technical, material, practical equipment of a classroom and teaching aids
3. Recommended study literature was up-to-date and available

A	B	C	D	E	SUM	A-B	C	D-E
10	3	4	1	1	19	68%	21%	11%
6	5	6	2	0	19	58%	32%	11%
6	6	5	0	0	17	71%	29%	0%
22	14	15	3	1	55			
65%		27%	7%					

Subject organization

1. Syllabi and requirements for completion of the subjects were clearly defined at the beginning of the semester
2. Teaching of subject was logically organized, understandable and comprehensible
3. Obtained Information were in accordance with the content of the subject
4. Topic of practical exercise was related to lecture topic
5. Requirements for the exam corresponded with the demands of the subject during the study.

A	B	C	D	E	SUM	A-B	C	D-E
8	6	4	0	0	18	78%	22%	0%
4	6	7	2	0	19	53%	37%	11%
8	6	4	0	0	18	78%	22%	0%
7	7	4	0	0	18	78%	22%	0%
8	6	4	0	0	18	78%	22%	0%
35	31	23	2	0	91			
73%		25%	2%					

Self-assessment, students' observations / opinions

1. I actively took part in the activities and discussions during lessons
2. I asses the students' activity in my group as

A	B	C	D	E	SUM	A-B	C	D-E
6	8	5	0	0	19	74%	26%	0%
6	8	5	0	0	19	74%	26%	0%
12	16	10	0	0	38			
74%		26%	0%					

What is your overall assessment of the subject?

A	B	C	D	E	SUM	A-B	C	D-E
4	6	7	2	0	19	53%	37%	11%
53%		37%	11%					

Pediatrics 1

In General

1. Subject fulfilled my expectations
2. I managed the study of the subject
3. The subject helped me to form relationship to my future profession

A	B	C	D	E	SUM	A-B	C	D-E
0	1	11	6	1	19	5%	58%	37%
2	9	6	2	0	19	58%	32%	11%
3	4	8	3	1	19	37%	42%	21%
5	14	25	11	2	57			
33%		44%	23%					

Study conditions

1. Number of students in a group
2. Technical, material, practical equipment of a classroom and teaching aids
3. Recommended study literature was up-to-date and available

A	B	C	D	E	SUM	A-B	C	D-E
1	2	6	6	4	19	16%	32%	53%
4	2	5	7	1	19	32%	26%	42%
3	5	8	1	0	17	47%	47%	6%
8	9	19	14	5	55			
31%		35%	35%					

Subject organization

1. Syllabi and requirements for completion of the subjects were clearly defined at the beginning of the semester
2. Teaching of subject was logically organized, understandable and comprehensible
3. Obtained Information were in accordance with the content of the subject
4. Topic of practical exercise was related to lecture topic
5. Requirements for the exam corresponded with the demands of the subject during the study.

A	B	C	D	E	SUM	A-B	C	D-E
6	6	4	3	0	19	63%	21%	16%
0	0	10	6	3	19	0%	53%	47%
1	4	9	4	1	19	26%	47%	26%
2	9	6	2	0	19	58%	32%	11%
1	9	5	4	0	19	53%	26%	21%
10	28	34	19	4	95			
40%		36%	24%					

Self-assessment, students' observations / opinions

1. I actively took part in the activities and discussions during lessons
2. I asses the students' activity in my group as

A	B	C	D	E	SUM	A-B	C	D-E
6	7	4	2	0	19	68%	21%	11%
6	5	7	1	0	19	58%	37%	5%
12	12	11	3	0	38			
63%		29%	8%					

What is your overall assessment of the subject?

A	B	C	D	E	SUM	A-B	C	D-E
2	3	7	5	2	19	26%	37%	37%
26%		37%	37%					

Internal Medicine 3

In General

1. Subject fulfilled my expectations
2. I managed the study of the subject
3. The subject helped me to form relationship to my future profession

A	B	C	D	E	SUM	A-B	C	D-E
0	3	11	5	0	19	16%	58%	26%
2	11	5	1	0	19	68%	26%	5%
5	5	6	2	1	19	53%	32%	16%
7	19	22	8	1	57			
46%		39%	16%					

Study conditions

1. Number of students in a group
2. Technical, material, practical equipment of a classroom and teaching aids
3. Recommended study literature was up-to-date and available

A	B	C	D	E	SUM	A-B	C	D-E
1	2	6	5	4	18	17%	33%	50%
1	1	5	7	4	18	11%	28%	61%
3	5	7	2	0	17	47%	41%	12%
5	8	18	14	8	53			
25%		34%	42%					

Subject organization

1. Syllabi and requirements for completion of the subjects were clearly defined at the beginning of the semester
2. Teaching of subject was logically organized, understandable and comprehensible
3. Obtained Information were in accordance with the content of the subject
4. Topic of practical exercise was related to lecture topic
5. Requirements for the exam corresponded with the demands of the subject during the study.

A	B	C	D	E	SUM	A-B	C	D-E
6	6	6	1	0	19	63%	32%	5%
0	1	11	6	1	19	5%	58%	37%
2	8	7	2	0	19	53%	37%	11%
2	9	6	2	0	19	58%	32%	11%
3	4	9	3	0	19	37%	47%	16%
13	28	39	14	1	95			
43%		41%	16%					

Self-assessment, students' observations / opinions

1. I actively took part in the activities and discussions during lessons
2. I asses the students' activity in my group as

A	B	C	D	E	SUM	A-B	C	D-E
4	9	3	3	0	19	68%	16%	16%
6	5	6	2	0	19	58%	32%	11%
10	14	9	5	0	38			
63%		24%	13%					

What is your overall assessment of the subject?

A	B	C	D	E	SUM	A-B	C	D-E
0	1	12	6	0	19	5%	63%	32%
5%		63%	32%					

Communication in Clinical Practice 2

In General
1. Subject fulfilled my expectations
2. I managed the study of the subject
3. The subject helped me to form relationship to my future profession

A	B	C	D	E	SUM	A-B	C	D-E
1	2	7	5	2	17	18%	41%	41%
7	4	5	1	0	17	65%	29%	6%
3	3	5	6	0	17	35%	29%	35%
11	9	17	12	2	51			
39%		33%	27%					

Study conditions
1. Number of students in a group
2. Technical, material, practical equipment of a classroom and teaching aids
3. Recommended study literature was up-to-date and available

A	B	C	D	E	SUM	A-B	C	D-E
4	4	7	2	0	17	47%	41%	12%
5	5	5	2	0	17	59%	29%	12%
4	2	7	2	0	15	40%	47%	13%
13	11	19	6	0	49			
49%		39%	12%					

Subject organization
1. Syllabi and requirements for completion of the subjects were clearly defined at the beginning of the semester
2. Teaching of subject was logically organized, understandable and comprehensible
3. Obtained Information were in accordance with the content of the subject
4. Topic of practical exercise was related to lecture topic
5. Requirements for the exam corresponded with the demands of the subject during the study.

A	B	C	D	E	SUM	A-B	C	D-E
6	3	8	0	0	17	53%	47%	0%
5	4	7	0	0	16	56%	44%	0%
7	4	6	0	0	17	65%	35%	0%
7	2	5	0	0	14	64%	36%	0%
7	3	6	1	0	17	59%	35%	6%
32	16	32	1	0	81			
59%		40%	1%					

Self-assessment, students' observations / opinions
1. I actively took part in the activities and discussions during lessons
2. I asses the students' activity in my group as

A	B	C	D	E	SUM	A-B	C	D-E
8	4	4	1	0	17	71%	24%	6%
8	5	3	1	0	17	76%	18%	6%
16	9	7	2	0	34			
74%		21%	6%					

What is your overall assessment of the subject?

A	B	C	D	E	SUM	A-B	C	D-E
2	4	8	3	0	17	35%	47%	18%
35%		47%	18%					

General Medicine and Practice at General Practitioner

In General

1. Subject fulfilled my expectations
2. I managed the study of the subject
3. The subject helped me to form relationship to my future profession

A	B	C	D	E	SUM	A-B	C	D-E
1	0	2	1	3	7	14%	29%	57%
2	1	1	0	3	7	43%	14%	43%
2	0	2	1	2	7	29%	29%	43%
5	1	5	2	8	21			
29%		24%		48%				

Study conditions

1. Number of students in a group
2. Technical, material, practical equipment of a classroom and teaching aids
3. Recommended study literature was up-to-date and available

A	B	C	D	E	SUM	A-B	C	D-E
1	1	1	0	2	5	40%	20%	40%
1	1	0	1	2	5	40%	0%	60%
0	1	1	0	3	5	20%	20%	60%
2	3	2	1	7	15			
33%		13%		53%				

Subject organization

1. Syllabi and requirements for completion of the subjects were clearly defined at the beginning of the semester
2. Teaching of subject was logically organized, understandable and comprehensible
3. Obtained Information were in accordance with the content of the subject
4. Topic of practical exercise was related to lecture topic
5. Requirements for the exam corresponded with the demands of the subject during the study.

A	B	C	D	E	SUM	A-B	C	D-E
0	0	1	1	4	6	0%	17%	83%
0	0	1	0	4	5	0%	20%	80%
0	0	1	0	4	5	0%	20%	80%
0	0	1	1	3	5	0%	20%	80%
1	0	1	1	3	6	17%	17%	67%
1	0	5	3	18	27			
4%		19%		78%				

Self-assessment, students' observations / opinions

1. I actively took part in the activities and discussions during lessons
2. I assess the students' activity in my group as

A	B	C	D	E	SUM	A-B	C	D-E
1	1	1	0	2	5	40%	20%	40%
0	0	1	1	2	4	0%	25%	75%
1	1	2	1	4	9			
22%		22%		56%				

What is your overall assessment of the subject?

A	B	C	D	E	SUM	A-B	C	D-E
0	1	0	2	2	5	20%	0%	80%
20%		0%		80%				