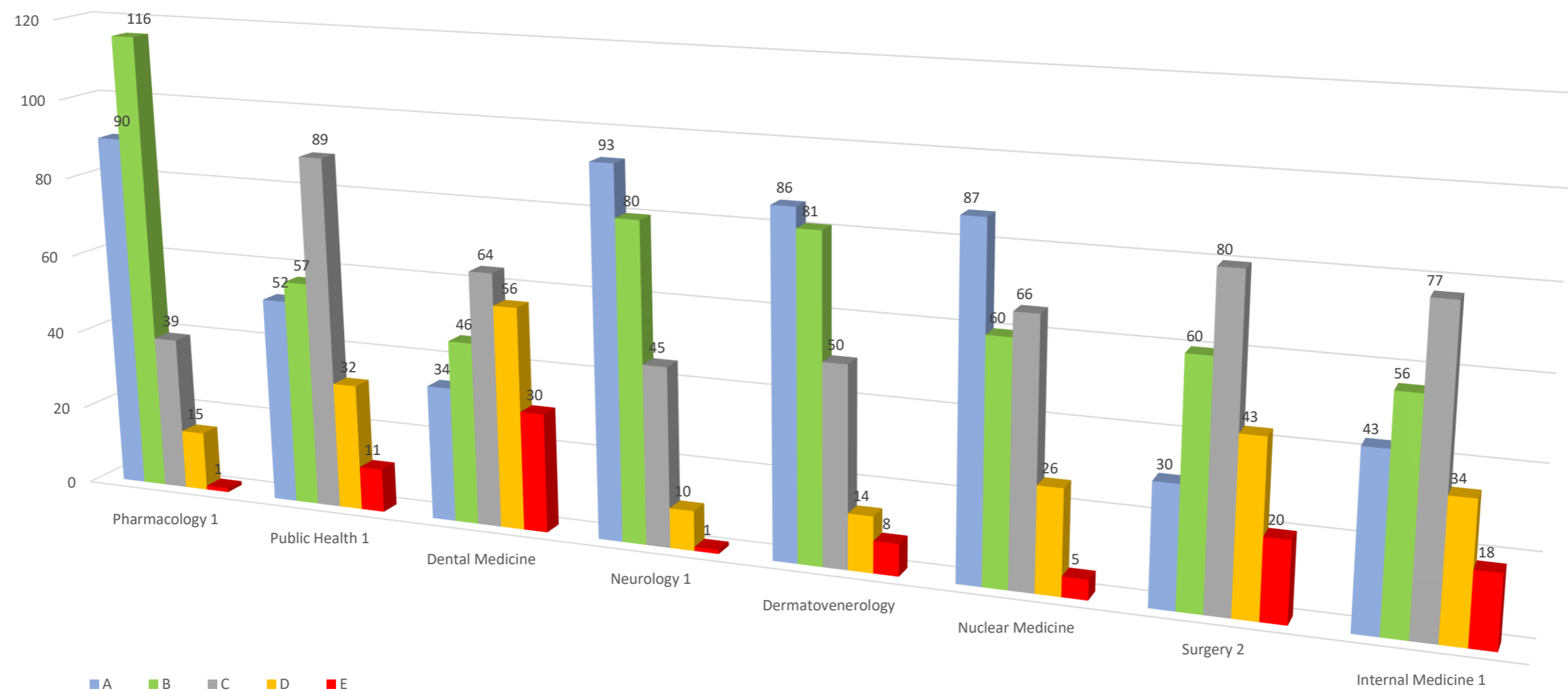


4. ročník VLa - zahraniční studenti

Celkový počet odpovědí

	Pharmacology 1	Public Health 1	Dental Medicine	Neurology 1	Dermatovenerolog y	Nuclear Medicine	Surgery 2	Internal Medicine 1
A	90	52	34	93	86	87	30	43
B	116	57	46	80	81	60	60	56
C	39	89	64	45	50	66	80	77
D	15	32	56	10	14	26	43	34
E	1	11	30	1	8	5	20	18
	261	241	230	229	239	244	233	228

4. ročník VLa - zahraniční studenti



Pharmacology 1

In General

1. Subject fulfilled my expectations
2. I managed the study of the subject
3. The subject helped me to form relationship to my future profession

A	B	C	D	E	SUM	A-B	C	D-E
7	6	4	1	1	19	68%	21%	11%
4	4	6	5	0	19	42%	32%	26%
6	6	6	1	0	19	63%	32%	5%
17	16	16	7	1	57			
58%		28%	14%					

Study conditions

1. Number of students in a group
2. Technical, material, practical equipment of a classroom and teaching aids
3. Recommended study literature was up-to-date and available

A	B	C	D	E	SUM	A-B	C	D-E
15	4	0	0	0	19	100%	0%	0%
4	12	2	0	0	18	89%	11%	0%
4	9	3	2	0	18	72%	17%	11%
23	25	5	2	0	55			
87%		9%	4%					

Subject organization

1. Syllabi and requirements for completion of the subjects were clearly defined at the beginning of the semester
2. Teaching of subject was logically organized, understandable and comprehensible
3. Obtained Information were in accordance with the content of the subject
4. Topic of practical exercise was related to lecture topic
5. Requirements for the exam corresponded with the demands of the subject during the study.

A	B	C	D	E	SUM	A-B	C	D-E
12	6	1	0	0	19	95%	5%	0%
5	9	1	3	0	18	78%	6%	17%
8	8	2	1	0	19	84%	11%	5%
4	9	3	1	0	17	76%	18%	6%
7	10	2	0	0	19	89%	11%	0%
36	42	9	5	0	92			
85%		10%	5%					

Self-assessment, students' observations / opinions

1. I actively took part in the activities and discussions during lessons
2. I asses the students' activity in my group as

A	B	C	D	E	SUM	A-B	C	D-E
7	9	3	0	0	19	84%	16%	0%
3	12	4	0	0	19	79%	21%	0%
10	21	7	0	0	38			
82%		18%	0%					

What is your overall assessment of the subject?

A	B	C	D	E	SUM	A-B	C	D-E
4	12	2	1	0	19	84%	11%	5%
84%		11%	5%					

Public Health 1

In General

1. Subject fulfilled my expectations
2. I managed the study of the subject
3. The subject helped me to form relationship to my future profession

A	B	C	D	E	SUM	A-B	C	D-E
1	2	12	2	1	18	17%	67%	17%
4	8	5	1	0	18	67%	28%	6%
1	3	7	6	1	18	22%	39%	39%
6	13	24	9	2	54			
35%		44%	20%					

Study conditions

1. Number of students in a group
2. Technical, material, practical equipment of a classroom and teaching aids
3. Recommended study literature was up-to-date and available

A	B	C	D	E	SUM	A-B	C	D-E
2	7	5	2	2	18	50%	28%	22%
5	6	3	2	1	17	65%	18%	18%
5	5	7	0	0	17	59%	41%	0%
12	18	15	4	3	52			
58%		29%	13%					

Subject organization

1. Syllabi and requirements for completion of the subjects were clearly defined at the beginning of the semester
2. Teaching of subject was logically organized, understandable and comprehensible
3. Obtained Information were in accordance with the content of the subject
4. Topic of practical exercise was related to lecture topic
5. Requirements for the exam corresponded with the demands of the subject during the study.

A	B	C	D	E	SUM	A-B	C	D-E
11	2	2	2	0	17	76%	12%	12%
7	5	3	0	0	15	80%	20%	0%
2	5	9	0	0	16	44%	56%	0%
6	6	3	2	0	17	71%	18%	12%
4	6	6	0	0	16	63%	38%	0%
30	24	23	4	0	81			
67%		28%	5%					

Self-assessment, students' observations / opinions

1. I actively took part in the activities and discussions during lessons
2. I asses the students' activity in my group as

A	B	C	D	E	SUM	A-B	C	D-E
1	1	7	7	2	18	11%	39%	50%
1	1	9	4	3	18	11%	50%	39%
2	2	16	11	5	36			
11%		44%	44%					

What is your overall assessment of the subject?

A	B	C	D	E	SUM	A-B	C	D-E
2	0	11	4	1	18	11%	61%	28%
11%		61%	28%					

Dental Medicine

In General

1. Subject fulfilled my expectations
2. I managed the study of the subject
3. The subject helped me to form relationship to my future profession

A	B	C	D	E	SUM	A-B	C	D-E
1	7	3	3	4	18	44%	17%	39%
5	4	6	0	2	17	53%	35%	12%
1	0	3	11	2	17	6%	18%	76%
7	11	12	14	8	52			
35%		23%	42%					

Study conditions

1. Number of students in a group
2. Technical, material, practical equipment of a classroom and teaching aids
3. Recommended study literature was up-to-date and available

A	B	C	D	E	SUM	A-B	C	D-E
10	3	3	1	0	17	76%	18%	6%
1	6	3	5	2	17	41%	18%	41%
1	0	6	5	4	16	6%	38%	56%
12	9	12	11	6	50			
42%		24%	34%					

Subject organization

1. Syllabi and requirements for completion of the subjects were clearly defined at the beginning of the semester
2. Teaching of subject was logically organized, understandable and comprehensible
3. Obtained Information were in accordance with the content of the subject
4. Topic of practical exercise was related to lecture topic
5. Requirements for the exam corresponded with the demands of the subject during the study.

A	B	C	D	E	SUM	A-B	C	D-E
2	2	5	4	3	16	25%	31%	44%
2	3	5	0	3	13	38%	38%	23%
1	4	4	6	1	16	31%	25%	44%
3	5	6	1	1	16	50%	38%	13%
3	2	7	3	1	16	31%	44%	25%
11	16	27	14	9	77			
35%		35%	30%					

Self-assessment, students' observations / opinions

1. I actively took part in the activities and discussions during lessons
2. I asses the students' activity in my group as

A	B	C	D	E	SUM	A-B	C	D-E
1	5	4	4	3	17	35%	24%	41%
2	4	3	6	2	17	35%	18%	47%
3	9	7	10	5	34			
35%		21%	44%					

What is your overall assessment of the subject?

A	B	C	D	E	SUM	A-B	C	D-E
1	1	6	7	2	17	12%	35%	53%
12%		35%	53%					

Neurology 1

In General

1. Subject fulfilled my expectations
2. I managed the study of the subject
3. The subject helped me to form relationship to my future profession

A	B	C	D	E	SUM	A-B	C	D-E
8	5	5	0	0	18	72%	28%	0%
7	5	4	2	0	18	67%	22%	11%
7	8	3	0	0	18	83%	17%	0%
22	18	12	2	0	54			
74%		22%	4%					

Study conditions

1. Number of students in a group
2. Technical, material, practical equipment of a classroom and teaching aids
3. Recommended study literature was up-to-date and available

A	B	C	D	E	SUM	A-B	C	D-E
13	3	1	0	0	17	94%	6%	0%
9	6	1	1	0	17	88%	6%	6%
4	5	5	2	1	17	53%	29%	18%
26	14	7	3	1	51			
78%		14%	8%					

Subject organization

1. Syllabi and requirements for completion of the subjects were clearly defined at the beginning of the semester
2. Teaching of subject was logically organized, understandable and comprehensible
3. Obtained Information were in accordance with the content of the subject
4. Topic of practical exercise was related to lecture topic
5. Requirements for the exam corresponded with the demands of the subject during the study.

A	B	C	D	E	SUM	A-B	C	D-E
3	8	4	1	0	16	69%	25%	6%
8	4	3	0	0	15	80%	20%	0%
8	5	2	1	0	16	81%	13%	6%
5	4	2	1	0	12	75%	17%	8%
6	8	2	0	0	16	88%	13%	0%
30	29	13	3	0	75			
79%		17%	4%					

Self-assessment, students' observations / opinions

1. I actively took part in the activities and discussions during lessons
2. I asses the students' activity in my group as

A	B	C	D	E	SUM	A-B	C	D-E
5	6	5	0	0	16	69%	31%	0%
4	6	5	1	0	16	63%	31%	6%
9	12	10	1	0	32			
66%		31%	3%					

What is your overall assessment of the subject?

A	B	C	D	E	SUM	A-B	C	D-E
6	7	3	1	0	17	76%	18%	6%
76%		18%	6%					

Dermatovenerology

In General

1. Subject fulfilled my expectations
2. I managed the study of the subject
3. The subject helped me to form relationship to my future profession

A	B	C	D	E	SUM	A-B	C	D-E
3	10	3	2	1	19	68%	16%	16%
8	5	5	1	0	19	68%	26%	5%
5	7	4	1	2	19	63%	21%	16%
16	22	12	4	3	57			
67%		21%	12%					

Study conditions

1. Number of students in a group
2. Technical, material, practical equipment of a classroom and teaching aids
3. Recommended study literature was up-to-date and available

A	B	C	D	E	SUM	A-B	C	D-E
13	3	1	0	0	17	94%	6%	0%
6	3	6	0	1	16	56%	38%	6%
5	7	2	2	0	16	75%	13%	13%
24	13	9	2	1	49			
76%		18%	6%					

Subject organization

1. Syllabi and requirements for completion of the subjects were clearly defined at the beginning of the semester
2. Teaching of subject was logically organized, understandable and comprehensible
3. Obtained Information were in accordance with the content of the subject
4. Topic of practical exercise was related to lecture topic
5. Requirements for the exam corresponded with the demands of the subject during the study.

A	B	C	D	E	SUM	A-B	C	D-E
8	4	4	1	1	18	67%	22%	11%
6	4	4	0	0	14	71%	29%	0%
7	6	3	0	1	17	76%	18%	6%
8	5	4	0	0	17	76%	24%	0%
5	8	3	1	0	17	76%	18%	6%
34	27	18	2	2	83			
73%		22%	5%					

Self-assessment, students' observations / opinions

1. I actively took part in the activities and discussions during lessons
2. I asses the students' activity in my group as

A	B	C	D	E	SUM	A-B	C	D-E
4	5	4	3	0	16	56%	25%	19%
3	7	4	2	0	16	63%	25%	13%
7	12	8	5	0	32			
59%		25%	16%					

What is your overall assessment of the subject?

A	B	C	D	E	SUM	A-B	C	D-E
5	7	3	1	2	18	67%	17%	17%
67%		17%	17%					

Nuclear Medicine

In General

1. Subject fulfilled my expectations
2. I managed the study of the subject
3. The subject helped me to form relationship to my future profession

A	B	C	D	E	SUM	A-B	C	D-E
6	2	8	1	0	17	47%	47%	6%
5	6	4	2	0	17	65%	24%	12%
4	4	5	4	0	17	47%	29%	24%
15	12	17	7	0	51			
53%		33%	14%					

Study conditions

1. Number of students in a group
2. Technical, material, practical equipment of a classroom and teaching aids
3. Recommended study literature was up-to-date and available

A	B	C	D	E	SUM	A-B	C	D-E
4	4	5	3	2	18	44%	28%	28%
8	4	5	1	0	18	67%	28%	6%
7	2	3	4	0	16	56%	19%	25%
19	10	13	8	2	52			
56%		25%	19%					

Subject organization

1. Syllabi and requirements for completion of the subjects were clearly defined at the beginning of the semester
2. Teaching of subject was logically organized, understandable and comprehensible
3. Obtained Information were in accordance with the content of the subject
4. Topic of practical exercise was related to lecture topic
5. Requirements for the exam corresponded with the demands of the subject during the study.

A	B	C	D	E	SUM	A-B	C	D-E
11	3	2	1	1	18	78%	11%	11%
10	3	5	0	0	18	72%	28%	0%
6	7	3	1	0	17	76%	18%	6%
8	4	4	0	1	17	71%	24%	6%
7	7	3	0	0	17	82%	18%	0%
42	24	17	2	2	87			
76%		20%	5%					

Self-assessment, students' observations / opinions

1. I actively took part in the activities and discussions during lessons
2. I asses the students' activity in my group as

A	B	C	D	E	SUM	A-B	C	D-E
2	5	7	4	0	18	39%	39%	22%
2	6	6	4	0	18	44%	33%	22%
4	11	13	8	0	36			
42%		36%	22%					

What is your overall assessment of the subject?

A	B	C	D	E	SUM	A-B	C	D-E
7	3	6	1	1	18	56%	33%	11%
56%		33%	11%					

Surgery 2

In General

1. Subject fulfilled my expectations
2. I managed the study of the subject
3. The subject helped me to form relationship to my future profession

A	B	C	D	E	SUM	A-B	C	D-E
1	5	4	6	2	18	33%	22%	44%
2	6	7	3	0	18	44%	39%	17%
4	5	4	4	1	18	50%	22%	28%
7	16	15	13	3	54			
43%		28%	30%					

Study conditions

1. Number of students in a group
2. Technical, material, practical equipment of a classroom and teaching aids
3. Recommended study literature was up-to-date and available

A	B	C	D	E	SUM	A-B	C	D-E
1	3	6	6	2	18	22%	33%	44%
3	7	7	0	1	18	56%	39%	6%
4	0	9	2	2	17	24%	53%	24%
8	10	22	8	5	53			
34%		42%	25%					

Subject organization

1. Syllabi and requirements for completion of the subjects were clearly defined at the beginning of the semester
2. Teaching of subject was logically organized, understandable and comprehensible
3. Obtained Information were in accordance with the content of the subject
4. Topic of practical exercise was related to lecture topic
5. Requirements for the exam corresponded with the demands of the subject during the study.

A	B	C	D	E	SUM	A-B	C	D-E
5	3	2	5	1	16	50%	13%	38%
1	2	5	4	4	16	19%	31%	50%
2	1	8	1	4	16	19%	50%	31%
2	5	2	4	0	13	54%	15%	31%
2	4	6	3	1	16	38%	38%	25%
12	15	23	17	10	77			
35%		30%	35%					

Self-assessment, students' observations / opinions

1. I actively took part in the activities and discussions during lessons
2. I asses the students' activity in my group as

A	B	C	D	E	SUM	A-B	C	D-E
2	9	4	1	0	16	69%	25%	6%
1	6	8	1	0	16	44%	50%	6%
3	15	12	2	0	32			
56%		38%	6%					

What is your overall assessment of the subject?

A	B	C	D	E	SUM	A-B	C	D-E
0	4	8	3	2	17	24%	47%	29%
24%		47%	29%					

Internal Medicine 1

In General

1. Subject fulfilled my expectations
2. I managed the study of the subject
3. The subject helped me to form relationship to my future profession

A	B	C	D	E	SUM	A-B	C	D-E
0	6	5	4	2	17	35%	29%	35%
5	4	4	4	0	17	53%	24%	24%
7	3	5	0	2	17	59%	29%	12%
12	13	14	8	4	51			
49%		27%	24%					

Study conditions

1. Number of students in a group
2. Technical, material, practical equipment of a classroom and teaching aids
3. Recommended study literature was up-to-date and available

A	B	C	D	E	SUM	A-B	C	D-E
2	5	2	3	5	17	41%	12%	47%
2	3	6	3	3	17	29%	35%	35%
2	1	7	3	3	16	19%	44%	38%
6	9	15	9	11	50			
30%		30%	40%					

Subject organization

1. Syllabi and requirements for completion of the subjects were clearly defined at the beginning of the semester
2. Teaching of subject was logically organized, understandable and comprehensible
3. Obtained Information were in accordance with the content of the subject
4. Topic of practical exercise was related to lecture topic
5. Requirements for the exam corresponded with the demands of the subject during the study.

A	B	C	D	E	SUM	A-B	C	D-E
5	2	5	3	1	16	44%	31%	25%
4	6	4	2	0	16	63%	25%	13%
2	3	8	2	1	16	31%	50%	19%
2	5	6	1	0	14	50%	43%	7%
4	2	7	3	0	16	38%	44%	19%
17	18	30	11	2	78			
45%		38%	17%					

Self-assessment, students' observations / opinions

1. I actively took part in the activities and discussions during lessons
2. I asses the students' activity in my group as

A	B	C	D	E	SUM	A-B	C	D-E
4	7	4	1	0	16	69%	25%	6%
3	6	6	1	0	16	56%	38%	6%
7	13	10	2	0	32			
63%		31%	6%					

What is your overall assessment of the subject?

A	B	C	D	E	SUM	A-B	C	D-E
1	3	8	4	1	17	24%	47%	29%
24%		47%	29%					